

INSIDE THE KIT	Code	Description	Quantity
	H0041	Locking Element Tail	2
	H0078	Washer $\varnothing 3,1 \times \varnothing 12 \times 1,8$	2
	H0082	Boom Spacer	2
	H0703	Yellow Tail Boom G700	1
	HA015	Double-Side Tape	2
	HC062	Socket Screw M3x12	2
	HC134	Flat Screw M3x8	1
	HC150	Set Screw M2.5x20	1
	HC165	Vite Nylon Esa M8x20	2
	HC206	Hex Nylon Nut M3	4
	HC239	Carbon Rod G700	1
	HC304	Tail Belt G700	1

STRETCH KIT SIZE 700

The kit allows the use of 690mm-710mm blades.
Replacing the boom, the tail belt, the carbon rod, is increased by 67.5mm distance of the tail rotor group.

Additionally required:

Main Blades & Tail Blades 115mm.



IMPORTANT NOTE:

When using bigger main blades, you need to optimize the gear ratio.

NITRO:

You need to change the ratio from 7.64 to 8.23.
For this need to replace the engine pulley from 28T to 26T.
The black clutch bell [H0674BL-S] can support the new ratio [H0675BL-26-S].

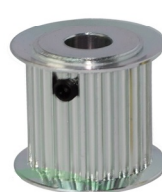
THUNDER:

You need to reduce 1 or 2 teeth compare to the pulley that you are using for 650 size H0175-xx-S.

[H0674BL-S]

[H0675BL-26-S]

[H0175-xx-S]



SPARE PARTS

Yellow/Carbon Tail Boom 700
[H0703-S]



Tail Push Rod G700
[HC239-S]



Tail Belt G700
[HC304-S]



Main Blades 690mm
[690TB]



Main Blades 710mm
[710TB]



Tail Blades 115mm
[115TB]

