

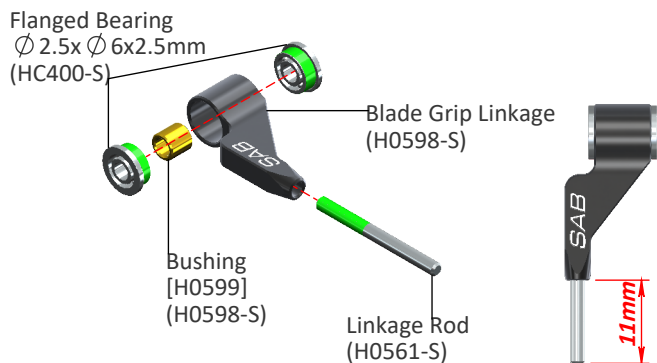


## BAG 1-1 TO 1-4

This KIT is designed to convert the 2-blade main rotor of the IL Pro 426 and Raw 420 into a 3-blade main rotor.  
 Please read this user manual carefully, it contains instructions for the correct assembly of the KIT.  
 Please refer to the website [www.goblin-helicopter.com](http://www.goblin-helicopter.com) for updates and other important information. Thanks You.

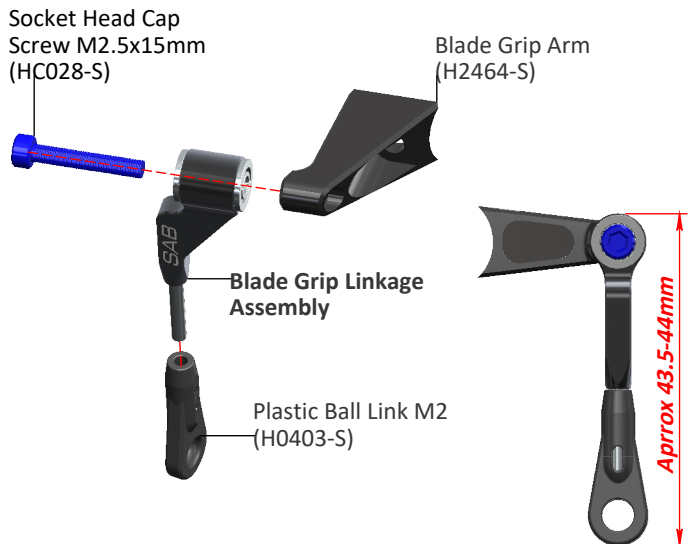
### BLADE GRIP LINKAGE ASSEMBLY ...X3

Already Assembled



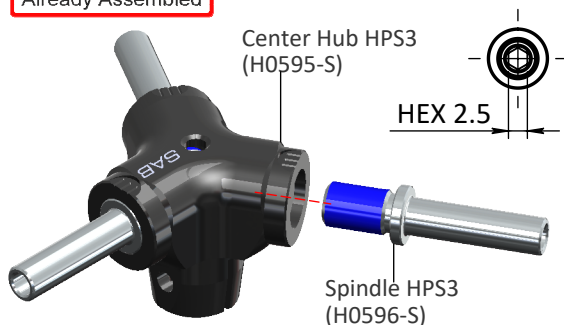
**PLEASE USE GREEN THREAD LOCK** to secure the bearings to the radius arms. Failure to secure the bearing will result in excessive slop/play.

### BLADE GRIP ARM ASSEMBLY ...X3



### CENTER HUB ASSEMBLY

Already Assembled



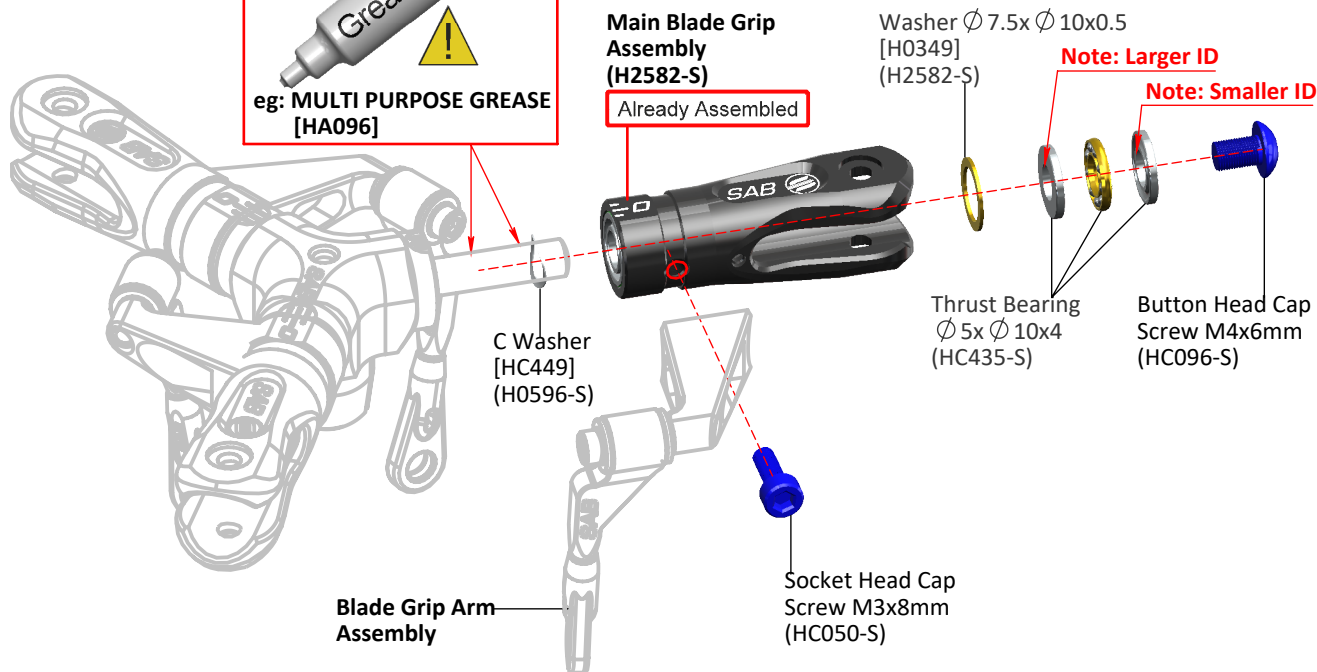
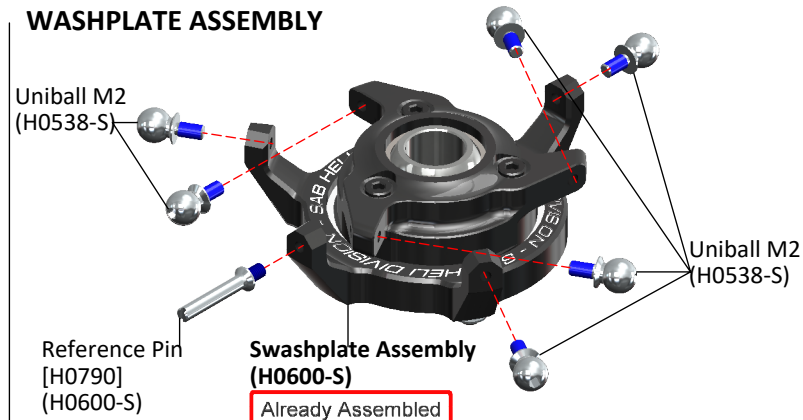
### WASHPLATE ASSEMBLY

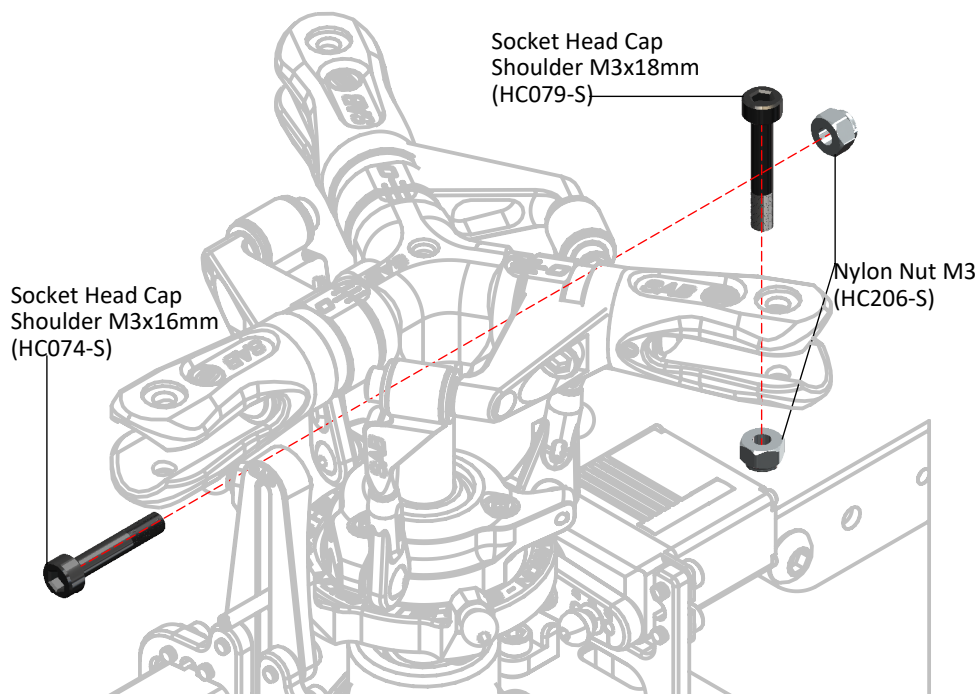
Uniball M2 (H0538-S)

Reference Pin [H0790] (H0600-S)

Swashplate Assembly (H0600-S)

Already Assembled





### ABOUT HPS3

For safety reasons we suggest to not exceed 3400 rpm.

In addition, we recommend using a smaller tail pulley in order to increase the tail rotor speed to counteract the additional

torque introduced by the 3rd rotor blade. You will find a 20T tail rotor pulley in the kit for this purpose.

### RECOMMENDATIONS

These parts should be used only with models SAB.

- 3 blade rotor heads require a much lower cyclic gain on flybarless systems. We recommend that you set your gain at least 30% lower than the gain you normally use on your 2 blade rotor head helicopters.

You can start increasing the gain after you complete your first flight. Running too high of a gain can induce a violent oscillation that can potentially cause damage to your helicopter in flight.

- Please follow all the instructions shown in the Goblin main manual. In this manual please read Chapter 2, Important notes

- Use Loctite on all threads.

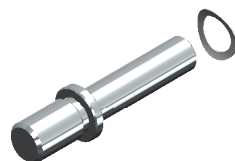
### SPARE PART

#### Center Hub HPS3 (H0595-S)



- 1 x Center Hub HPS3.
- 1 x Nylon M3.
- 1 x Socket Head Cap Shoulder M3x16mm.

#### Spindle Shaft HPS3 (H0596-S)



- 1 x Spindle Shaft HPS3.
- 1 x C Washer.

#### Blade Grip Linkage HPS3 (H0598-S)



- 1 x Blade Grip Linkage HPS3.
- 1 x Linkage Rod.
- 1 x Bushing.
- 2 x Flanged Bearing  $\varnothing 2.5x \varnothing 6x2.5mm$ .

#### Swashplate HPS3 (H0600-S)



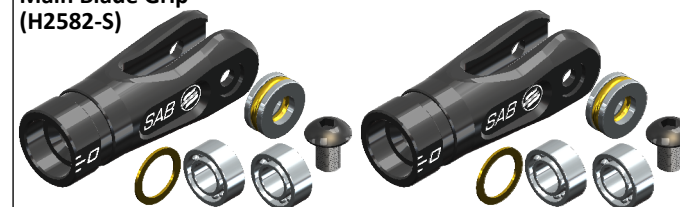
- 1 x Swashplate HPS3 SET.

#### Blade Grip Arm HPS3 (H2464-S)



- 1 x Blade Grip Arm HPS3.
- 1 x Socket Head Cap Screw M2.5.x8mm.

#### Main Blade Grip (H2582-S)



- 2 x Main Blade Grip SET.