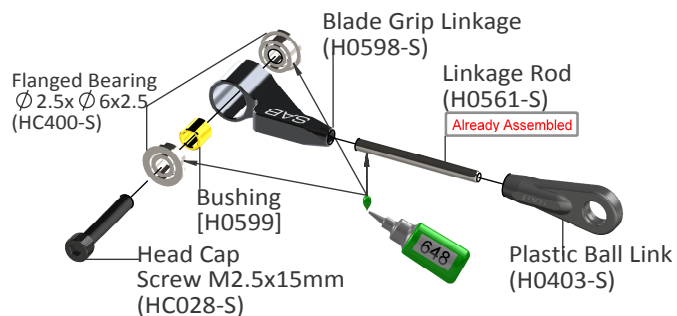
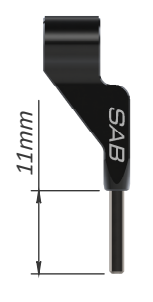


Please read this user manual carefully, it contains instructions for the correct assembly of the KIT.  
Please refer to the website [www.goblin-helicopter.com](http://www.goblin-helicopter.com) for updates and other important information. Thanks You.

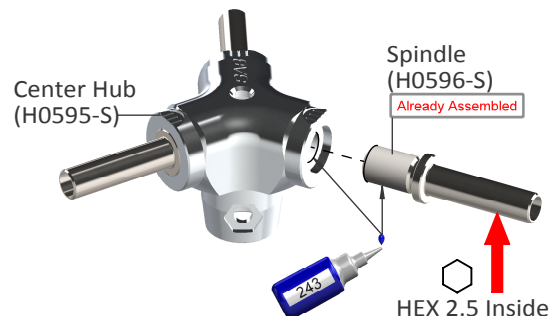
## Blade Grip Linkage Assembly



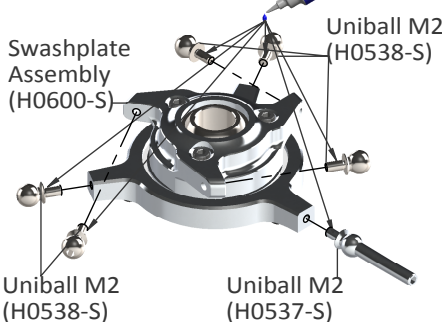
## Note



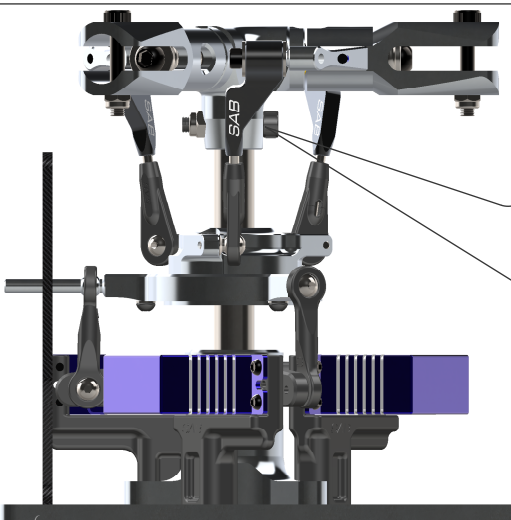
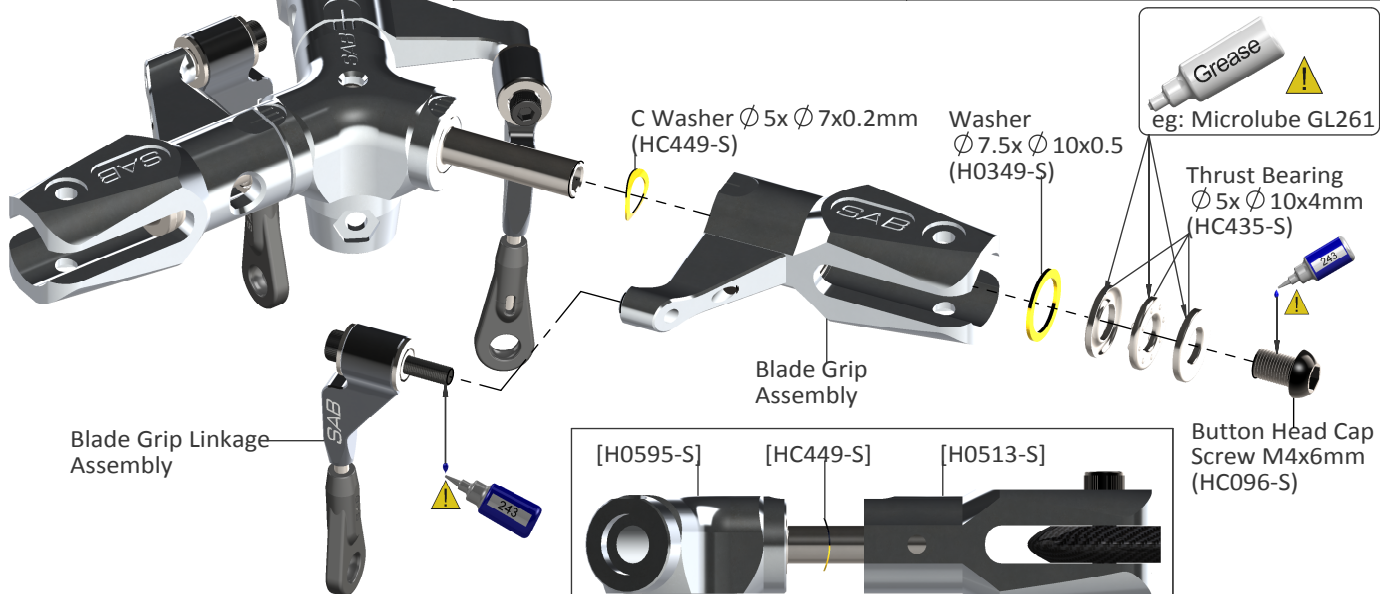
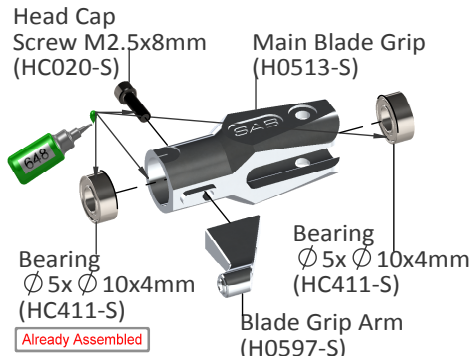
## Center Hub Assembly



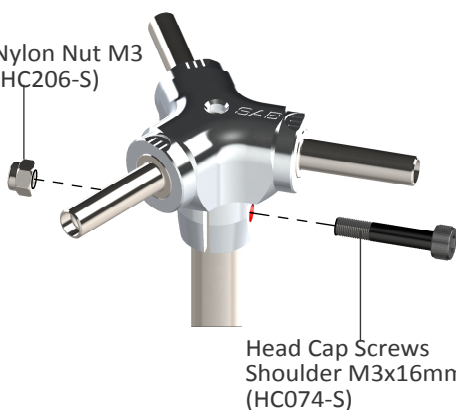
## Swashplate Assembly



## Blade Grip Assembly



Nylon Nut M3 (HC206-S)



Head Cap Screws Shoulder M3x16mm (HC074-S)

## Linkage Rod A Assembly . . . x3



(Initial length for the rods from the swashplate to the Blade Grip.)

## ABOUT HPS3

For safety reasons we suggest to not exceed 3400 rpm. 

In addition, we recommend using a smaller tail pulley in order to increase the tail rotor speed to counteract the additional torque introduced by the 3rd rotor blade. You will find a 20T tail rotor pulley in the kit for this purpose.

## RECOMMENDATIONS

These parts should be used only with models SAB Goblin 380.

- 3 blade rotor heads require a much lower cyclic gain on flybarless systems. We recommend that you set your gain at least 30% lower than the gain you normally use on your 2 blade rotor head helicopters. You can start increasing the gain after you complete your first flight. Running too high of a gain can induce a violent oscillation that can potentially cause damage to your helicopter in flight.
- Please follow all the instructions shown in the Goblin main manual. In this manual please read Chapter 2, Important notes
- Use Loctite on all threads.

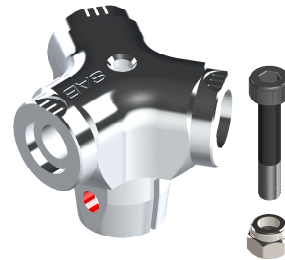
## SPARE PARTS

### Blade Grip [H0513-S]



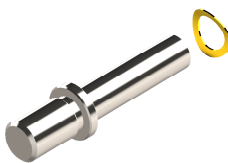
- 2 x Blade Grip.
- 2 x Thrust Bearing  $\varnothing 5 \times \varnothing 10 \times 4 \text{mm}$ .
- 4 x Bearing  $\varnothing 5 \times \varnothing 10 \times 4 \text{mm}$ .
- 2 x Washer  $\varnothing 7.5 \times \varnothing 10 \times 0.5 \text{mm}$ .
- 2 x Button Head Socket Cap M4x6mm.
- 2 x Washer  $\varnothing 5 \times \varnothing 7 \times 0.1 \text{mm}$ .

### Center Hub [H0595-S]



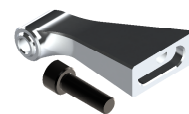
- 1 x Center Hub.
- 1 x Socket Head Cap Screw Shouldered M3x16mm.
- 1 x Metric Hex Nylon Nut M3.

### Spindle Shaft [H0596-S]



- 1 x Spindle Shaft.
- 1 x C Washer  $\varnothing 5 \times \varnothing 5 \times 0.2 \text{mm}$ .

### Blade Grip Arm [H0597-S]



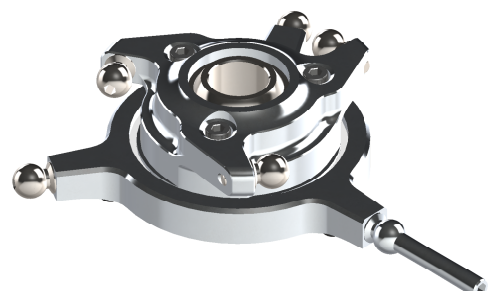
- 1 x Blade Grip Arm.
- 1 x Socket Head Cap Screw M2.5x8mm.

### Linkage [H0598-S]



- 1 x Linkages.
- 1 x Linkage Rod.
- 1 x Bushing.
- 2 x Flanged Bearings  $\varnothing 2.5 \times \varnothing 6 \times 2.5 \text{mm}$ .

### Swashplate [H0600-S]



- 1 x Swashplate Assembly.
- 5 x UniBall M2  $\varnothing 4.7 \text{H3}$ .
- 1 x UniBall M2  $\varnothing 4.7 \text{H20}$ .