

HF3C ROTOR HEAD [H0825-K]

ROTOR HEAD SPECIFICALLY DESIGNED FOR F3C COMPETITION



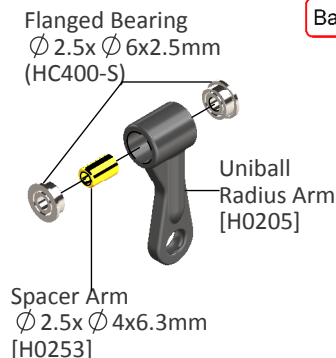
H0825M_rev01

Please read this user manual carefully, it contains instructions for the correct assembly of the KIT.
Please refer to the website www.goblin-helicopter.com for updates and other important information. Thanks You.

Uniball Arm Assembly

... x2

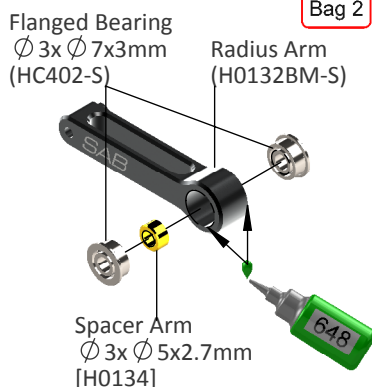
Bag 1



Radius Arm Assembly

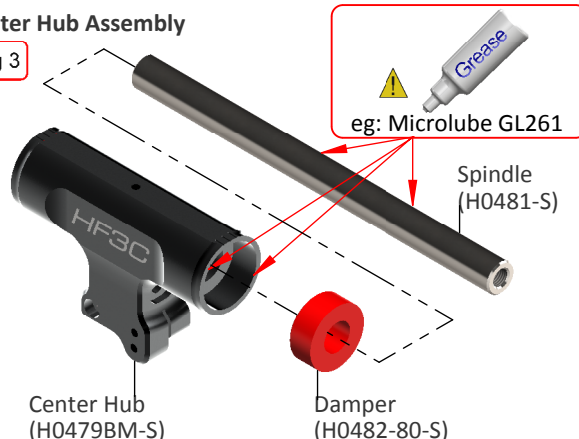
... x2

Bag 2



Center Hub Assembly

Bag 3



Note:

The HF3C head should be assembled with one, 1mm shim (HC230) on each side. The blade grips must move freely, but they should not move just under their own weight. After approximately 10/20 flights, please check preload, you can add one or two 0.2mm shim (HC232) if preload has changed.

Swashplate Assembly

Bag 4



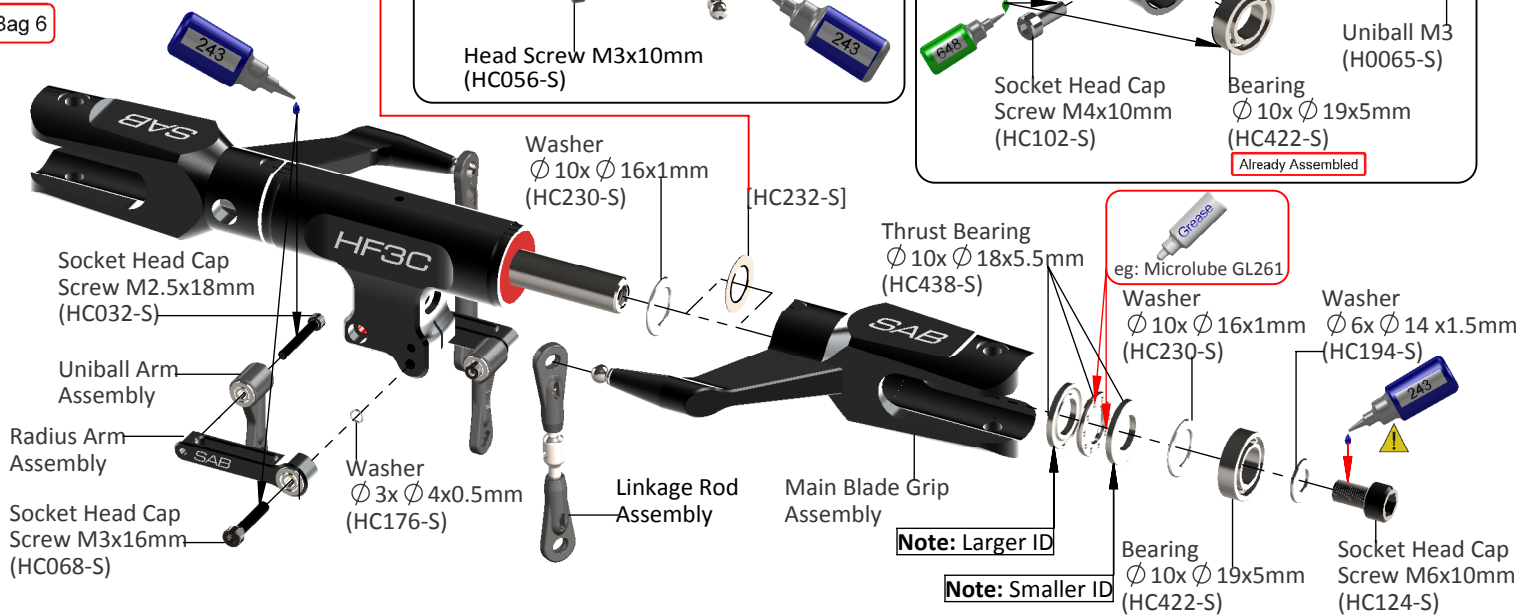
Main Blade Grip Assembly

...x2

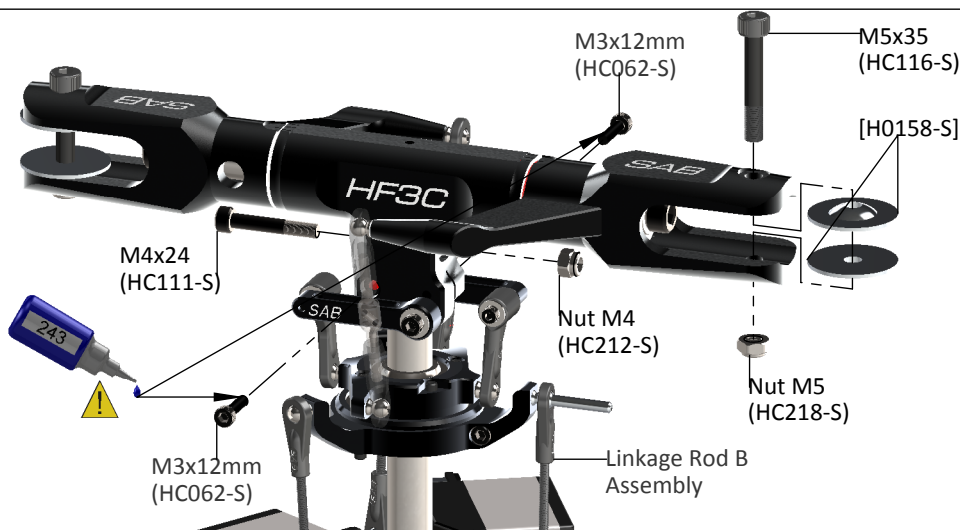
Bag 5



Bag 6

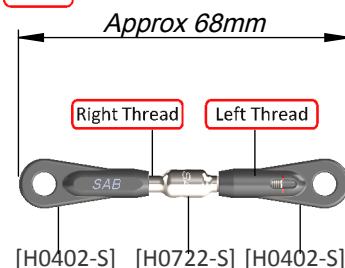


Bag 7



Linkage Rod A Assembly ...x2

Bag 8



(Initial length for the rods from the swashplate to the Blade Grip.)

ABOUT HF3C

We suggest you to use the Thunderbolt blades 730TB in combination with tail blades 115TB.

For hovering, it is recommended a headspeed of 1400-1500 rpm
For normal flight, it is recommended a headspeed of 1900 rpm

It is possible change the rigidity of the dampening system. In the Kit, you can find Damper H0482-80 : 80 Shore (Red). You can change H0482-70 (Yellow), H0482-90 (Green), for change the head characteristic.

Changing the Damper, please check the Axial preload. The blade grips must move freely, but they should not move just under their own weight. You can remove / add the 0.2mm shim (HC232) from each side for to get perfect preload.



For safety reasons we suggest to not exceed 2000rpm
Every 15/20 flights, please check the preload in the head and any play of the spindle axis. If need change the dampers.

Thunderbolt 730TB
Specifically designed
for F3C competition.

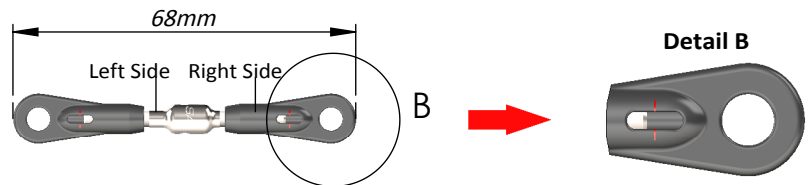


RECOMMENDATIONS

- These parts should be used only with models SAB Goblin URUKAY.
- Please follow all the instructions shown in the Goblin main manual. In this manual please read Chapter 2, Important notes.
- Use Loctite on all threads.
- Put a small amount of grease inside the hub and the damper.

TIPS:

- * Clock-wise, counter clock-wise thread.
- * By turning the linkages you can adjust tracking. If tracking is adjusted correctly, you'll see the metal part line up around in the center of the opening.



SPARE PARTS

Uniball M3 [H0065-S]



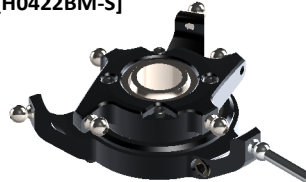
- 5 x Uniball M3.

Radius Arm [H0132BM-S]



- 2 x Radius Arms.
- 2 x Spacer Arm $\varnothing 3x \varnothing 5x2.7mm$.
- 2 x Spacer Arm $\varnothing 2.5x \varnothing 4x6.3mm$.
- 2 x Uniball Radius Arms.
- 2 x Head Cap Screws M3x16mm.
- 2 x Head Cap Screws M2.5x18mm.
- 2 x Washers $\varnothing 3x \varnothing 4x0.5mm$.
- 2 x Flanged Bearings $\varnothing 2.5x \varnothing 6x2.5$.
- 2 x Flanged Bearings $\varnothing 3x \varnothing 7x3$.

Swashplate [H0422BM-S]



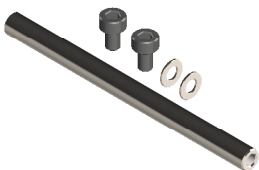
- 1 x Swashplate Assembly.
- 2 x Bearings 30x $\varnothing 37x4mm$.
- 6 x Uniballs M3x4 $\varnothing 5 H3$.
- 1 x Uniball M3x4 $\varnothing 5 H18$.
- 3 x Socket Head Cap Screws M2x5mm.
- 4 x Socket Head Cap Screws M2x8mm.
- 3 x Swasher $\varnothing 2x \varnothing 5x0.5$.

Center Hub [H0479BM-S]



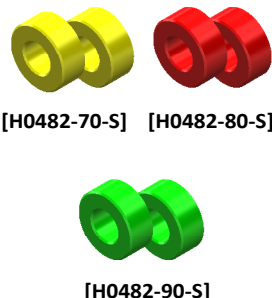
- 1 x Center Hub.
- 2 x Socket Head Cap Screws M3x12mm.
- 1 x Socket Head Cap Screws Shouldered M4x25mm.
- 1 x Metric Hex Nylon Nut M4.

Spindle Shaft [H0481-S]



- 1 x Spindle Shaft.
- 2 x Socket Head Cap Screw M6x10mm.
- 2 x Washer $\varnothing 6,3x \varnothing 15x1$.

Damper [H0482-xx-S]



- 2 x Damper.

Blade Grip [H0719BM-S]



- 1 x Blade Grip.
- 1 x Thrust Bearing $\varnothing 10x \varnothing 18x5.5mm$.
- 2 x Bearing $\varnothing 10x \varnothing 19x5$.
- 1 x Washer $\varnothing 10x \varnothing 16x1$.
- 1 x Head Cap Screw M4x8.

Linkage [H0722-S]



- 2 x Linkages M3x40mm.
- 4 x Plastic Ball Links.

Blade Grip Arm [H0817BM-S]



- 2 x Blade Grip Arm.
- 2 x Socket Head Cap Screw M4x10mm.
- 2 x Uniball M3x3.5 $\varnothing 5 H5.5$