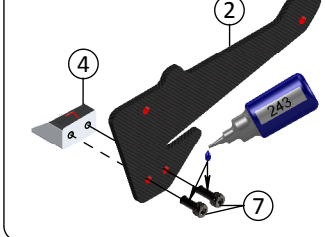
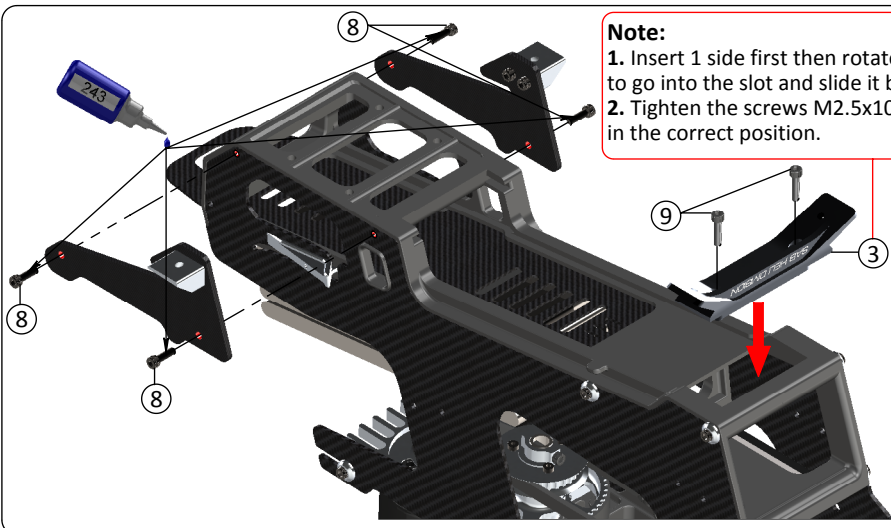
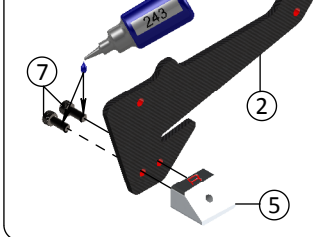


| POS | Code | Description | Quantity |
|-----|----------|--------------------------------|----------|
| 1 | H0007 | Finishing Washer M3 | 4 |
| 2 | H0646 | Front Landing Gear Support | 2 |
| 3 | H0647 | Rear Landing Gear Support | 1 |
| 4 | H0648-01 | Front Landing Gear Block Left | 1 |
| 5 | H0648-02 | Front Landing Gear Block Right | 1 |
| 6 | H0649 | Carbon Fiber Landing Gear | 2 |
| 7 | HC018 | Head Cap Screws M2.5x6 | 4 |
| 8 | HC020 | Head Cap Screws M2.5x8 | 4 |
| 9 | HC022 | Head Cap Screws M2.5x10 | 2 |
| 10 | HC050 | Head Cap Screws M3x8 | 4 |
| 11 | HA112 | Canopy Edge protection 100mm | 1 |

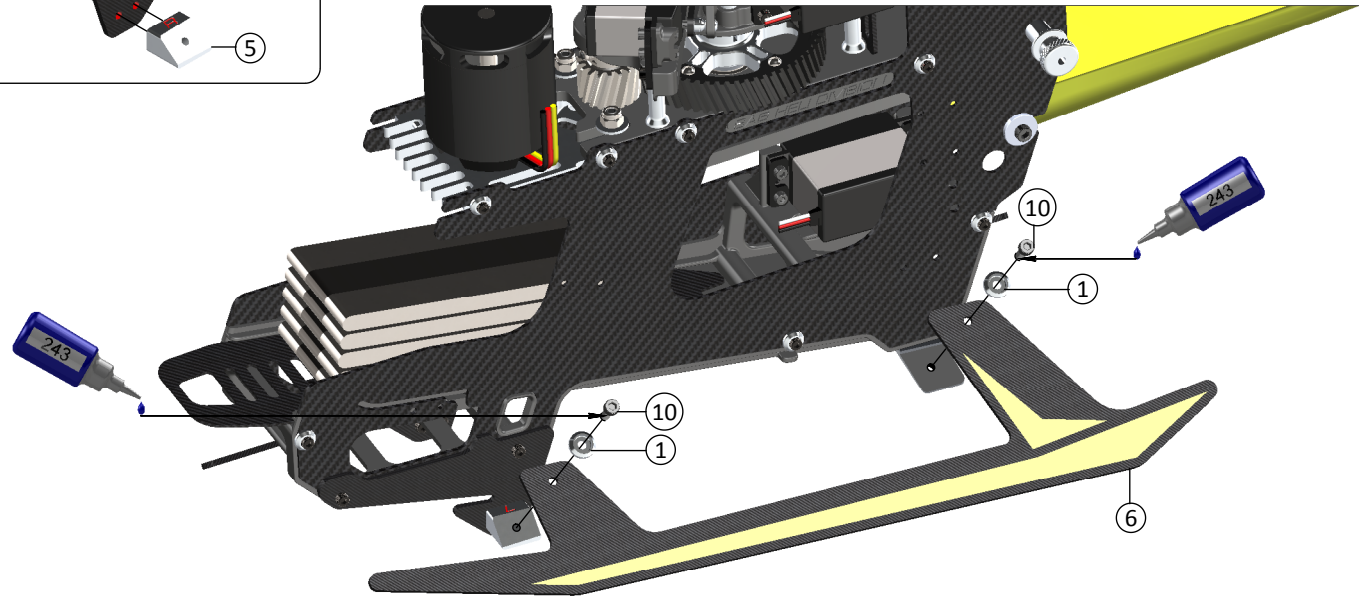
Front Landing Gear Support L Assembly



Front Landing Gear Support R Assembly



Note:
1. Insert 1 side first then rotate the other side to go into the slot and slide it back until it stops.
2. Tighten the screws M2.5x10 when H0647 is in the correct position.



Canopy Edge Protection

- It is suggested to install the canopy edge protector, as shown in this picture.
- Please use an adhesive to keep the edge protector in place.

